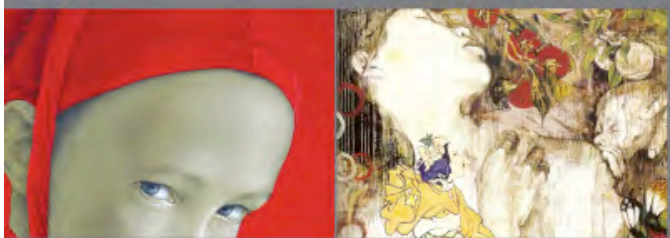


# ELISABETH DE BRABANT

CHINESE CONTEMPORARY FINE ART



SHANGHAI - PARIS - HONG-KONG



Elisabeth de Brabant is a contemporary art curator and consultant, based in Shanghai with offices in Paris and Hong Kong. She works with a network of recognized contemporary artists throughout China and Asia. She works closely with an international network of artists, museums, and collectors to create culturally relevant art programs in Shanghai.

Born in New York City's Upper East Side, Elisabeth's interest in Asian art has its roots in a family that has been in Asia since 1908 and who have historically been major collectors and donors of contemporary Art. Elisabeth, herself earned a BA in Art History and Comparative Literature from Columbia University, and went on to complete her combined Masters Degree in Fine Arts from Central St. Martin's in London and Parson's School of Design in New York.

Having recently opened the new Fuxing Xi Lu Art Center in Shanghai's French Concession, Elisabeth and her team are currently responsible for pioneering some of the most influential and innovative contemporary art programs and art management services in Shanghai today. The Art Center serves as a gallery while providing a platform for lectures, workshops, classes, and exhibitions.

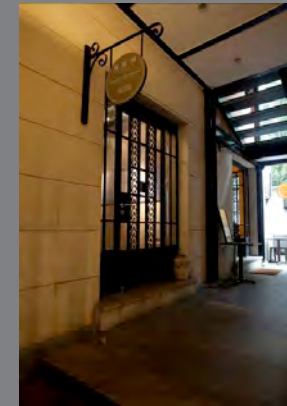
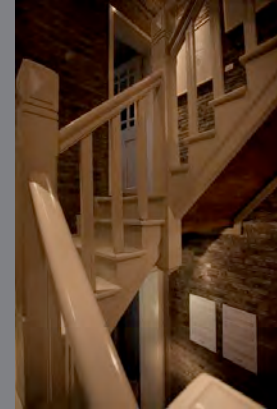
As a curator, she selects outstanding content, conceives and produces international level exhibitions. Elisabeth de Brabant, with her team, envisions and generates exhibitions and events that encourage critical reflection and dialogue around Asian Contemporary Art. She cooperates with local and international artists to discover and develop innovative directions.

As an internationally accredited expert in the field of Asian Contemporary art, Elisabeth de Brabant is frequently sought out as a speaker to visiting museums and art buyers including prestigious names such as the Guggenheim and MOMA. Having lectured at numerous Institutions, she continues to draw on her extensive and varied experiences to speak lucidly on the dynamic and versatile world of Asian contemporary art, and its future, roots, and challenges.

As an art consultant, Elisabeth de Brabant advises corporations, collectors, institutions, and private art professionals by providing content, direction, marketing, and art business knowledge. She offers her expertise in order to raise greater awareness of the latest developments in the current art market and to explore opportunities that synthesize art and business.



## Art Center

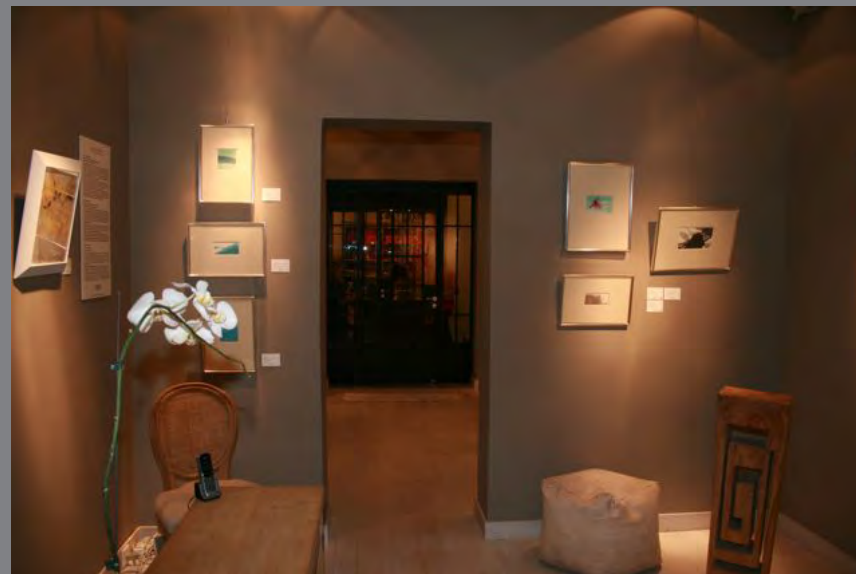


The Elisabeth de Brabant Art Center opened to the public on January 15, 2009. The Art Center is a platform for dialogue and creative vision around Chinese Contemporary Art. Programs include exhibitions both in-house and internationally, lectures, museum programs, art competitions and art-film festivals, all of which aim to encourage and improve intellectual collaboration between Contemporary artists and art aficionados both Chinese and Foreign.

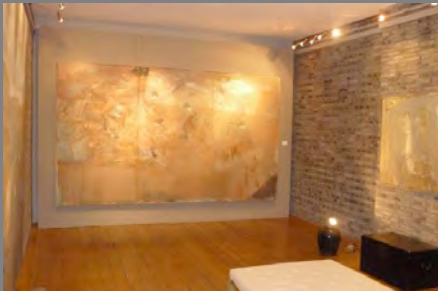
The Art Center is housed in an unmistakably French Concession 1933 building on Fuxing Xi Lu. Typically Shanghainese, it overflows with history and character; each of the exposed bricks hold the original stamped signature of the artisan that crafted them. The four-story town house was stripped down to its rudiments and carefully restored brick by brick to create the Art Center. The building's true meaning and historical allure run parallel to Elisabeth de Brabant's vision for the art works it houses. Unlike a bare white gallery space, this French Concession art destination takes on a new approach in Shanghai to promote artistic exchange and more sophisticated platforms for many of the artists that it supports.



L' Annexe



# Lower Gallery



## Upper Gallery



## Previous Events



"Inner Dialogue" VIP Opening



Art Talk with Xiao Hui Wang



Art Dinner with Xiao Hui Wang



"Time in West, Light in East" VIP Opening



## **FACILITIES**

- Historic lane house with original brick walls
- Kitchenette
- 1 Bathroom
- 3.5 floors, with 5.6 M ceiling on 3<sup>rd</sup> floor

## **ART CENTER HOUSE**

Upper Gallery: 37 SQM

Lower gallery: 37 SQM

## **L'ANNEXE**

37 SQM

Capacity: 20-30 people seated per floor; 60 people standing



## RENTAL RATES

### **ART CENTER**

Daytime rental: 7500 RMB – 10 am – 5pm (including time required for set-up)

Evening rental: 12500 RMB – 5pm – 12pm\* (including time required for set-up)

\*Events that extend after midnight incur an hourly fee of 1500 RMB / hour

### **L'ANNEXE**

Daytime rental: 5000 RMB – 10 am – 5pm (including time required for set-up)

Evening rental: 7500 RMB – 5pm – 12pm\* (including time required for set-up)

\*Events that extend after midnight incur an hourly fee of 1500 RMB / hour

### **CATERING**

Catering is not included. We can provide a list of various different caterers that we can work with if required. Fees will depend on chosen caterer.

### **ART LECTURES**

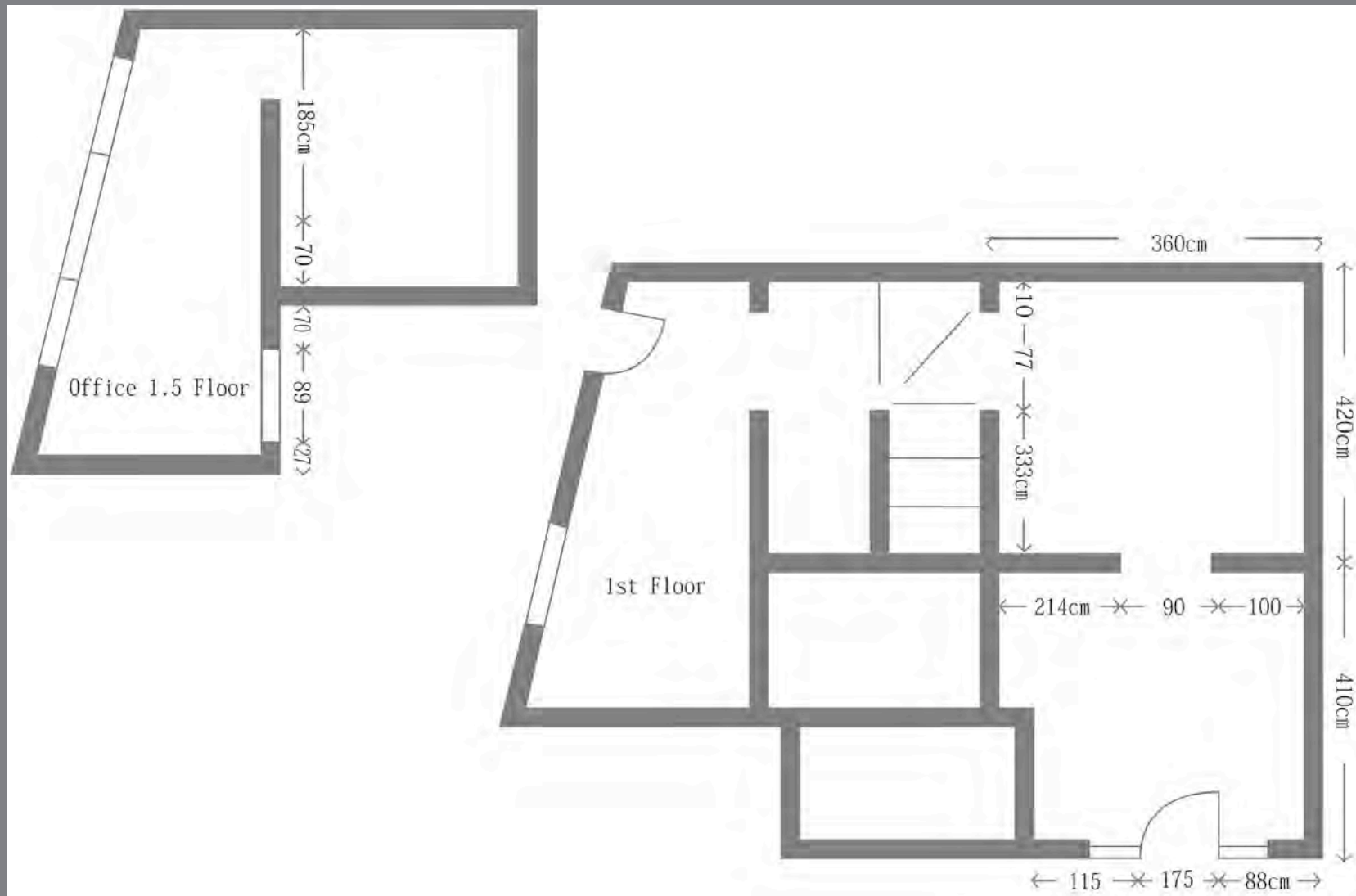
Elisabeth de Brabant, Art Center Director and Curator, is available to give Art Lectures at a fee of 5000 RMB per event.

### **NOTES**

1. A security guard is required at all events. Fee is 200 RMB per event
2. A 50% deposit is required to book intention. If the event is cancelled this deposit is forfeited by the leasee
3. The leasee accepts full responsibility for the space and contents. A security deposit will be required, fee dependant on current exhibition
4. Rates exclude use of furniture, silverware, staff, etc. for all events
5. Set-up and take down of the event is the full responsibility of the leasee

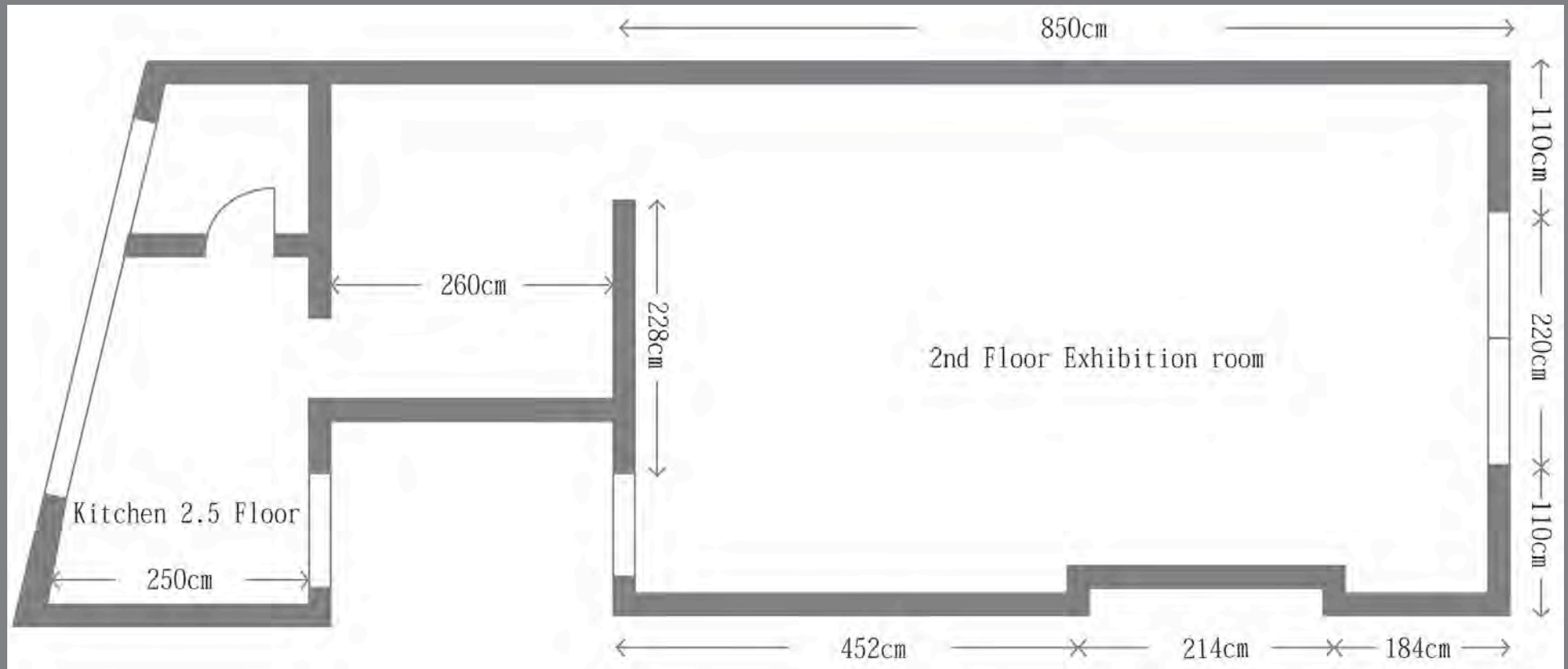


# GROUND FLOOR - ANNEXE



NORTH

# MAIN HOUSE – LOWER GALLERY



↓  
NORTH



# MAIN HOUSE – UPPER GALLERY



NORTH



Shanghai – Paris – Hong Kong

No. 299 Fuxing West Road  
Shanghai 200031  
复兴西路299号上海200031

F : +86 21 64 71 28 53

M : +86 138 1789 3775

[elisabeth@elisabethdebrabant.com](mailto:elisabeth@elisabethdebrabant.com)

[www.elisabethdebrabant.com](http://www.elisabethdebrabant.com)

